





The National Missionary Convention is now...



ICOM
INTERNATIONAL CONFERENCE ON
MISSIONS

Same Mission. New Name.

Independent
Christian Churches
and Churches of
Christ Today



MOVE
Videos, Tour Dates and More



Unity and Truth in Restoration Movement



Christian Churches
(Disciples of
Christ)



Independent
Christian Churches
and Churches of
Christ



Churches of Christ
(Non-
Instrumental)

← Unity

Truth →

2020 US Religion Census

- Independent Christian Churches and Churches of Christ
 - 1.4 million members, trending slightly up
 - 4,787 congregations
 - average church size 288
 - #1 per capita mega churches
- Churches of Christ (non-instrumental)
 - 1.4 million members, trending down
 - 11,881 congregations
 - average church size 120
- Christian Churches (Disciples of Christ)
 - 0.4 million members, trending sharply down
 - 3,135 congregations
 - average church size 127

Conservative Churches Grew Fastest in 1990's, Report Says



Give this article



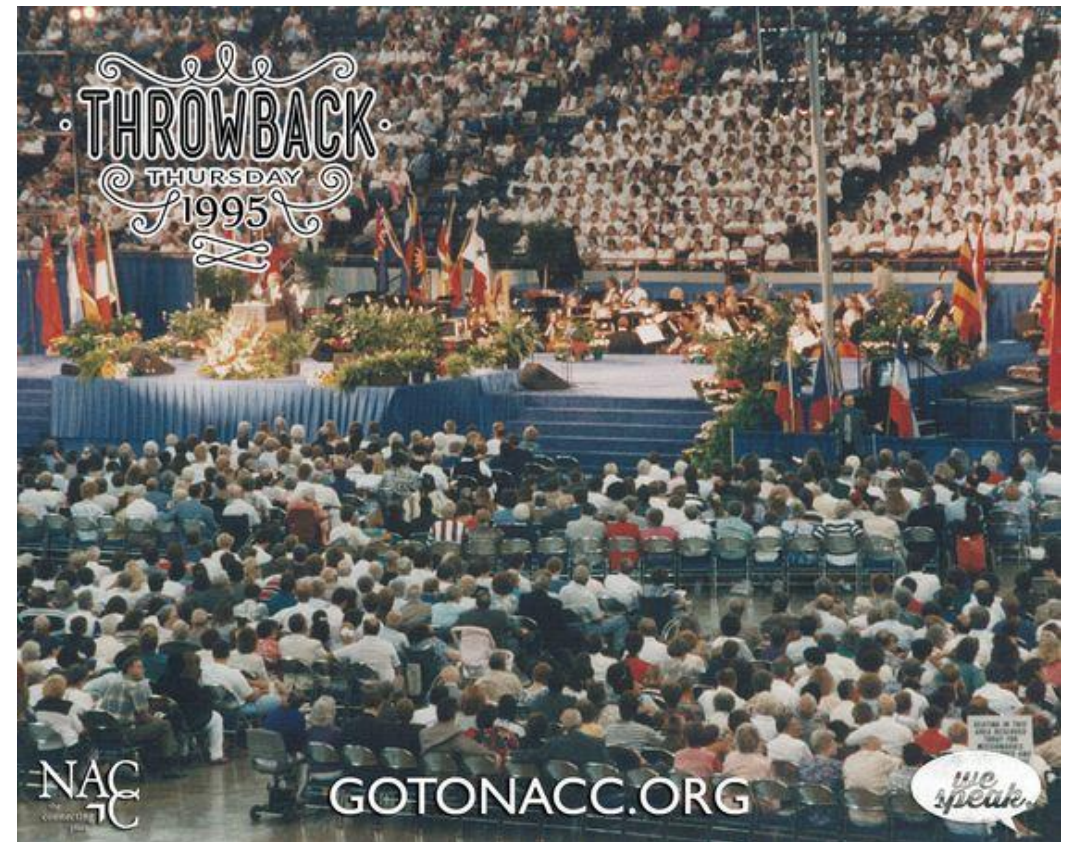
By **Laurie Goodstein**

Sept. 18, 2002

The study, "Religious Congregations and Membership: 2000," found that the fastest-growing religious denomination in the last 10 years was the Church of Jesus Christ of Latter-day Saints, which enlists thousands of young Mormon missionaries to recruit door to door and boosted its membership in the United States by 19.3 percent to a total of 4.2 million since the last survey in 1990.

The denominations that recorded the next highest growth were the conservative Christian Churches and Churches of Christ, with 18.6 percent; the Assemblies of God, a major Pentecostal denomination, with 18.5 percent; and the Roman Catholic Church, with 16.2 percent.

Key Events of the Independent Christian Churches and Churches of Christ



North American
Christian
Convention
1927-2018



Bible College Movement: 1920s+

Peak in 1980 with 40 colleges, now less than 20.



U.S. News' List Includes Several Christian Colleges (Plus News Briefs)

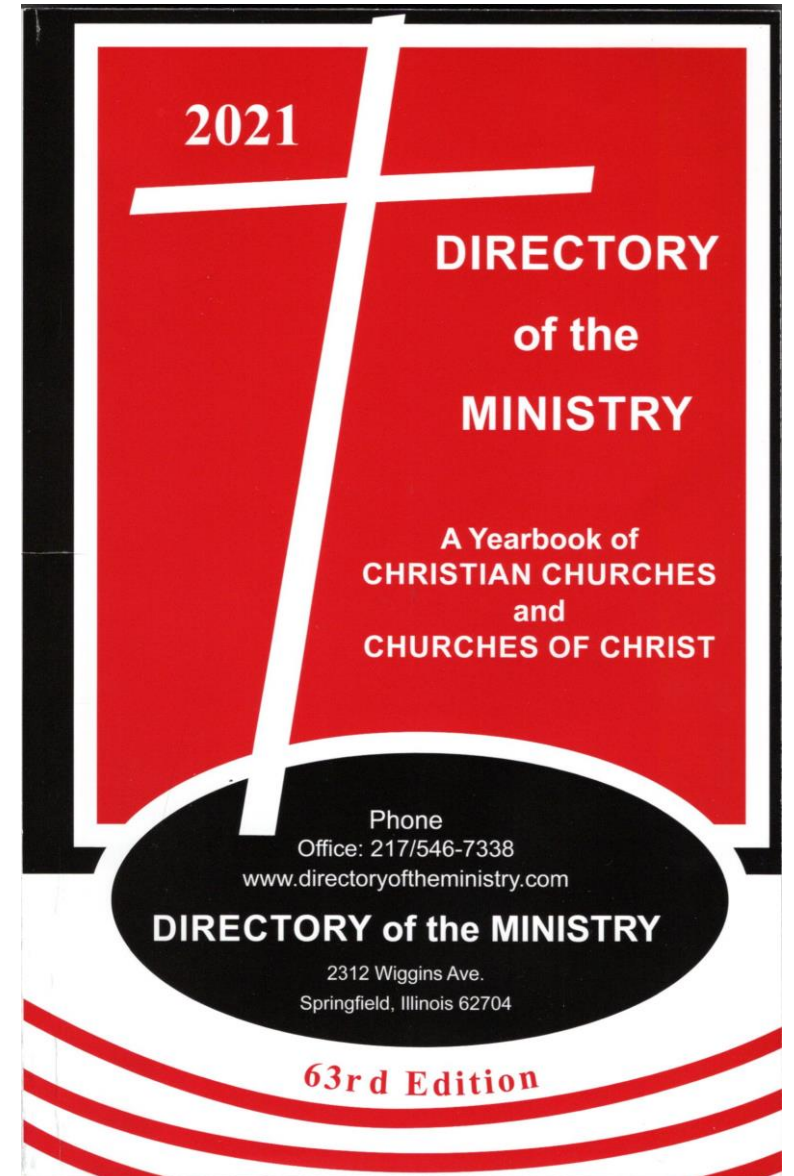
by Christian Standard | 14 September, 2022

U.S. News & World Report's annual "**Best Colleges**" issue was released Monday. Among the colleges affiliated with Christian churches and churches of Christ to make the list:

- **Milligan University** (Milligan, Tenn.)—No. 12 in Regional Universities South; No. 2 in Best Value Schools in the South; No. 32 in Top Performers in Social Mobility ("for enrolling and graduating large proportions of disadvantaged students")
- **Johnson University Tennessee** (Knoxville, Tenn.)—No. 26 in Regional Universities South; No. 13 in Top Performers in Social Mobility
- **William Jessup University** (Rocklin, Calif.)—No. 46 in Regional Colleges West; No. 23 in Best Colleges for Veterans; No. 44 for Top Performers in Social Mobility
- **Point University** (West Point, Ga.)—No. 68 in Regional Colleges South; No. 63 in Top Performers in Social Mobility
- **Hope International University** (Fullerton, Calif.)—No. 85 in Regional Colleges West; No. 64 for Top Performers in Social Mobility
- **Kentucky Christian University** (Grayson, Ky.)—No. 76–99 in Regional Colleges South; No. 71 in Top Performers in Social Mobility
- **Bushnell University** (Eugene, Ore.)—No. 83 in Regional Colleges West; No. 86 in Top Performers in Social Mobility.

Key Events

- 1955 – Directory of the Ministry
- 1968 - Disciples restructuring
 - form denomination

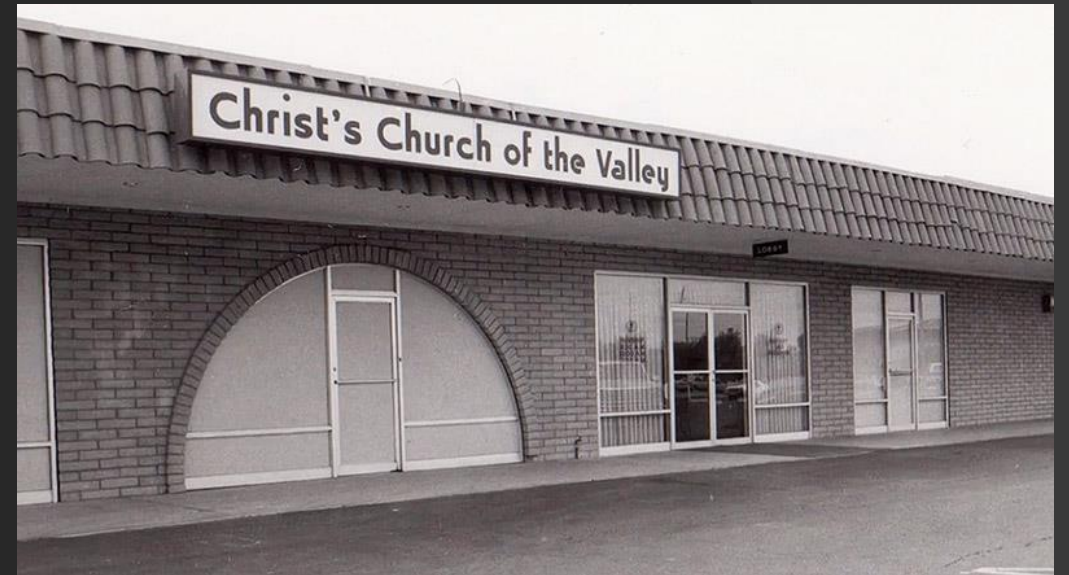


<u>CHURCH</u>	<u>ATTENDANCE</u>	<u>BAPTISMS</u>	<u>LOCATION</u>
Christ's Church of the Valley	32,065	3,729	Phoenix AZ
Southeast Christian Church	25,940	1,197	Louisville KY
Shepherd Church	10,586	986	Porter Ranch CA
The Crossing ^{2 3}	10,156	791	Quincy IL
Northview Church ^{1 2}	9,408	484	Indianapolis IN
Parkview Christian Church ¹	8,942	688	Orland Park IL
Central Christian Church	8,795	750	Mesa AZ
Traders Point Christian Church	8,334	532	Whitestown IN
Compassion Christian Church	8,201	692	Savannah GA
Eastside Christian Church	7,976	890	Anaheim CA
Crossroads Christian Church ³	7,830	689	Corona CA
2 42 Community Church	7,075	424	Brighton MI
Crossroads Christian Church	6,785	532	Grand Prairie TX
Canyon Ridge Christian Church ^{3 4}	6,700	558	Las Vegas NV
Christ's Church of the Valley	6,687	527	San Dimas CA
Mountain Christian Church ³	6,276	604	Joppa MD
Eastview Christian Church ³	6,238	290	Normal IL
Real Life Church ^{1 3}	5,729	490	Valencia CA
Compass Christian Church ³	5,537	356	Colleyville TX
The Crossing, a Christian Church ¹	5,438	608	Las Vegas NV
Northside Christian Church	5,384	310	New Albany IN

Note: these numbers are pre-covid

Christ's Church of the Valley (CCV)

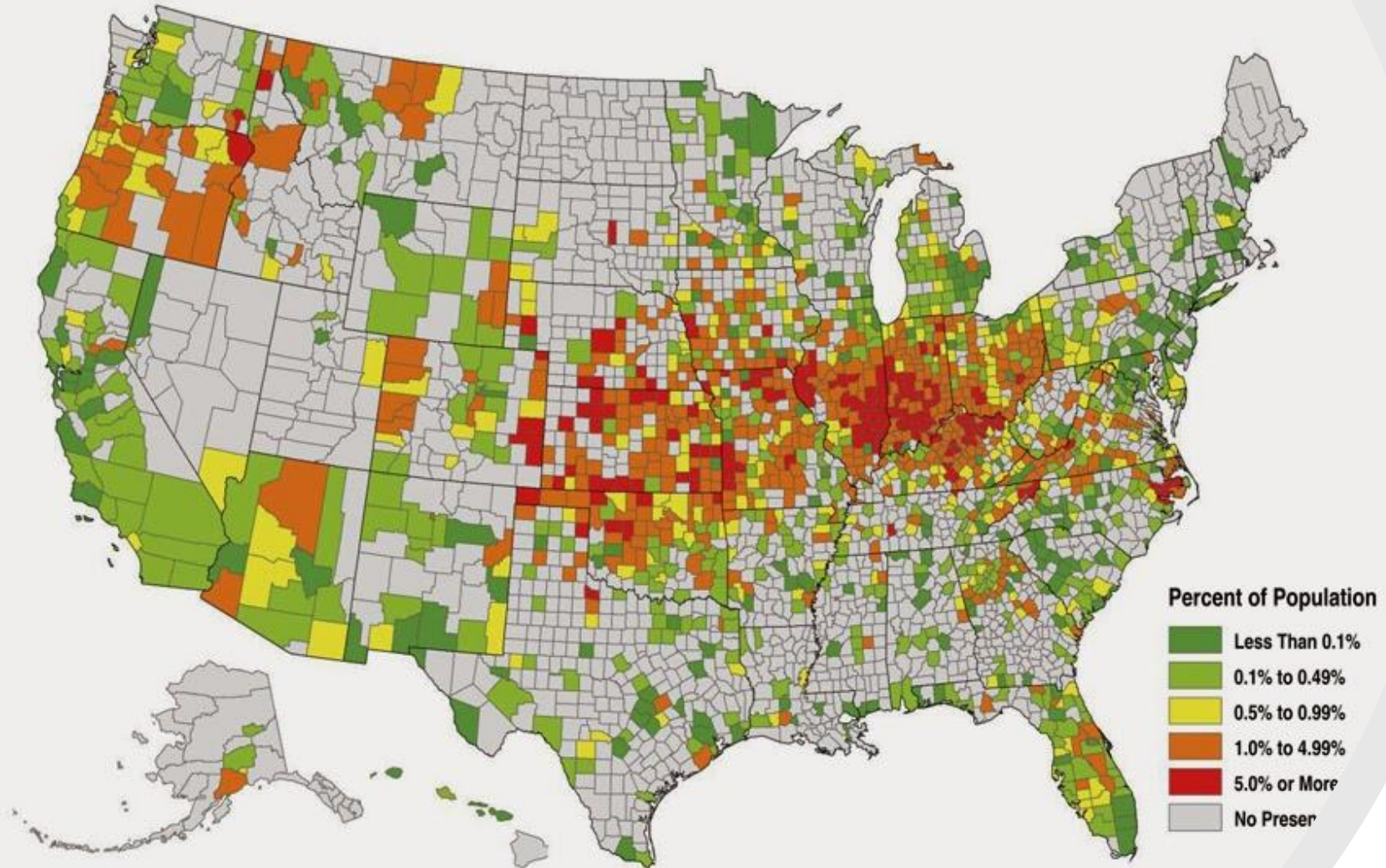
- Founded 1982 in Phoenix
- Men and Church (61/39)
- Family engagement
 - if a child is the first person in a household to become a Christian, there is a 3.5% probability everyone else in the household will follow.
 - Mother: 17%
 - Father: 93%
- Largest Christian Church





Christian Churches and Churches of Christ Adherents as a Percentage of Total Population, 2010

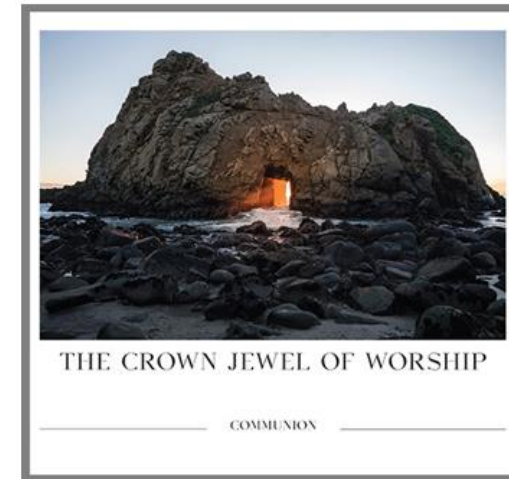
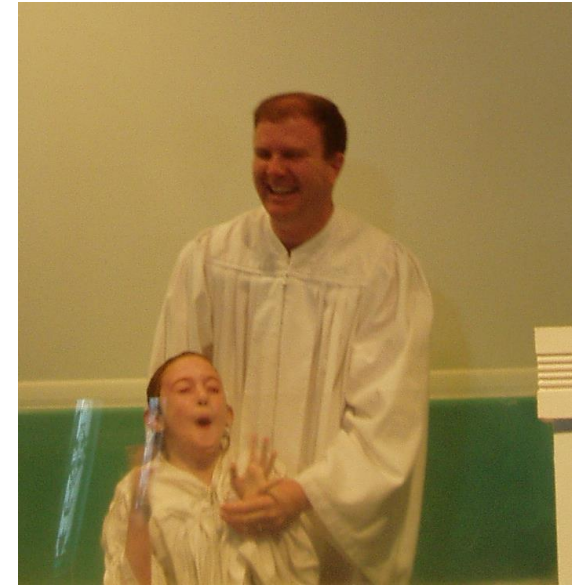
Religious Congregations & Membership Study • www.USReligionCensus.org



5,293 congregations and 1,453,160 adherents were reported

Distinctives

- Baptism
- Communion
- Scripture
- Church governance / autonomy
- Balance (gospel, social, missions, scripture, non-sectarian)
- Entrepreneurial
 - Good at seeing new opportunities and willing to take initiative and risk



THE CROWN JEWEL OF WORSHIP

COMMUNION

COMMUNION: THE CROWN JEWEL OF WORSHIP

By Victor Knowles

The Lord's Supper is the crown jewel of worship. It should be the central act of our Christian worship. Please consider four vital truths from the inspired writings of Paul in regard to Communion.

In 1 Corinthians 11:23-25, Paul recounted how Christ himself passed along this teaching about Communion to him. The words "do this in remembrance of me" are Jesus' own words, spoken at the Last Supper (Luke 22:19). Augustine called the Lord's Supper the *verbum visibile*—the *visible* word at the action of the Lord's Table. The *visible* Word of God (the bread and the cup) belong with the *audible* Word of God (Jesus' words of institution). . . .

[+ READ MORE](#)

Foreign Missions

- Over 1,000 missionaries
- Raising their own support





ICOM 2023!
November, 16-19
Oklahoma City, OK

HOPE
for the nations

2023 PRESIDENT:
STEPHANIE GARMAN FREED

ENCOURAGE

EQUIP

ENLIST



ICOM

INTERNATIONAL CONFERENCE ON

MISSIONS

NOVEMBER 4-5, 2022 • COLUMBUS, OHIO



CAMP IS BACK



**Rooted in the Gospel.
Connected to the Church.
Made for Kingdom Work.**

[Learn More About CIY](#)



**LOVE
COSTS
EVERY
THING**

Christ In Youth (CIY)

- Conferences for different age groups:
 - High School: Move
 - Middle School: Believe
 - Grade School: Super Start
 - 60,000+ teenagers per year
- Missions: Engage
- Multimedia
- <http://www.ciy.com/MOVE>



Amplifying Christ's call to be Kingdom workers.



**BIRTHING:
STADIA**

MEMBER OF THE



**BUILDING:
VISIONEERING**



**GROWING:
CDF CAPITAL**

MEMBER OF THE



**STAFFING:
SLINGSHOT GROUP**

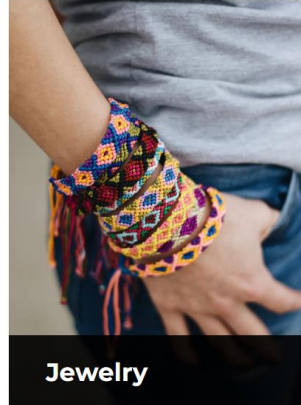
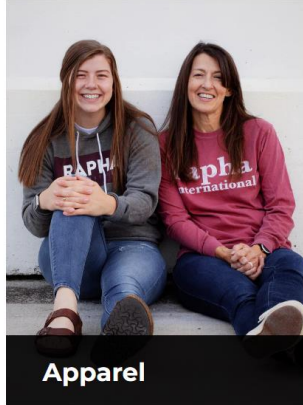


**STRENGTHENING:
CO:MISSION**



**REPURPOSING:
KAIROS**

SHOP BY TYPE



FREEDOM STORE DONATE f t rss

RAPHA HOUSE

FIGHTING CHILD TRAFFICKING and SEXUAL EXPLOITATION by BRINGING HOPE and FREEDOM through RAPHA HOUSE

HUMAN TRAFFICKING | ABOUT US | WHAT WE DO | TAKE ACTION

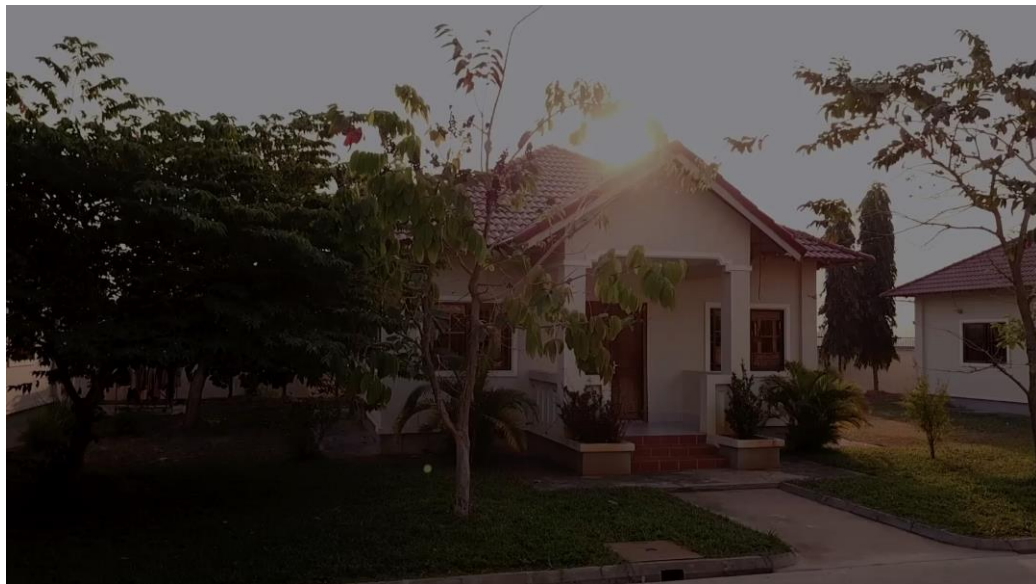


WORTHY

[LOVE-RESCUE-HEAL]
PREVENTION

NANCY FROM MICHIGAN IS HELPING TO PROVIDE
A SOLID FUTURE FOR SOPHA IN CAMBODIA.

STOP TRAFFICKING BEFORE IT STARTS >>



Christian City Homes: Children, Retirement, Disabilities

- 1000 residents
- 96 buildings on 500 acres



Live. Thrive. Get Involved. Serve. Give.



Vibrant Senior Life

- Active Senior Living
- Assisted Living
- Skilled Nursing & Rehabilitation



Hope For Children

- Children's Village Residential Program
- Crossroads Foster Care & Adoption Program
- Safe Place Runaway and Homeless Youth Program
- Thrive Graduate Transition Program

A screenshot of the Christian City website homepage. The header features the Christian City logo with a cross symbol and the tagline "Loving People...Loving People". To the right, there is a banner for "Senior Care" with a photo of an elderly woman and a child, and a "Learn more" button. Below the header is a navigation menu with links for Home, Children, Seniors, Donate, About Us, Thrift Store, Careers, Events, and Contact. The main content area features a large image of a young girl looking thoughtful, with the text "Your Gifts Help Hurting Children" and a call to action: "Help children of abuse, neglect & abandonment. Become a monthly donor of any amount." On the right side, there is a "Main Menu" with dropdown arrows for "Children's", "Senior Ser", "Donate or", "Request a Tou", "Christian City", and "Register to rec & stay inform".

I.D.E.S.:
*International
Disaster
Emergency
Fund*



Verse by Verse by Verse by Verse by Verse



ILAD promotes human flourishing through educational, economic, and social development in language communities that are under-resourced.



International Literacy and Development

@ILADNGO · Nonprofit organization

Financial Resources: *CDF and CFR*

CHURCH DEVELOPMENT FUND, INC. HELP | 888.540.7112

CUSTOMER LOGIN Enter Login ID

INVESTMENTS LOANS ABOUT CDF INVEST NOW

Earn Interest. Help Churches.
It's that simple.

When you invest with Church Development Fund, you do more than earn interest; you help provide financial resources to growing churches and ministries all across the United States.

Investment Options Customer Login



[Online Account Access](#)
[Privacy Policy](#)
[Site Map](#)
[Customer Service](#)
 Toll-Free: 800-881-3863

- INVESTMENTS
- LOANS
- CAPITAL CAMPAIGNS
- RETIREMENT
- ABOUT
- CUSTOMER SERVICE
- DONATE
- LEGACY GIVING
- VIEW RATES

Funding Ministry... Changing Lives

Type	Annual Yield (APY)	Minimum Investment
15 Month Certificate	3.1%	\$15,000

Team Expansion



- More than 300 full-time adult workers
- Serving in over 40 countries
- 70 distinct church planting projects
- Attendance: 27,700 per week
- More than 23,000 baptisms

- Christian Standard (1866)
- The Lookout (1888)
- Sunday School and VBS – best selling in U.S.





About Us

At Woodlawn, we want to see lives changed for Christ so that everyone reflects the image of God and the church truly represents the Kingdom of God. We strive to be a place of fully devoted disciples, each using their gifts to influence others (both inside and outside the church) to grow closer to Christ through relational discipleship.

Woodlawn is historically and theologically connected to the American Restoration Movement, also called the Stone-Campbell Movement. The movement began on the American frontier in the early 19th century and sought to unify all Christians into a single body patterned after the New Testament church. For more information on the Restoration Movement, click [here](#). We are an independent, self-supporting, and self-governing body of Christ followers whose board of elders is elected annually by the congregation.



QUESTIONS?

Next week: In essentials, unity